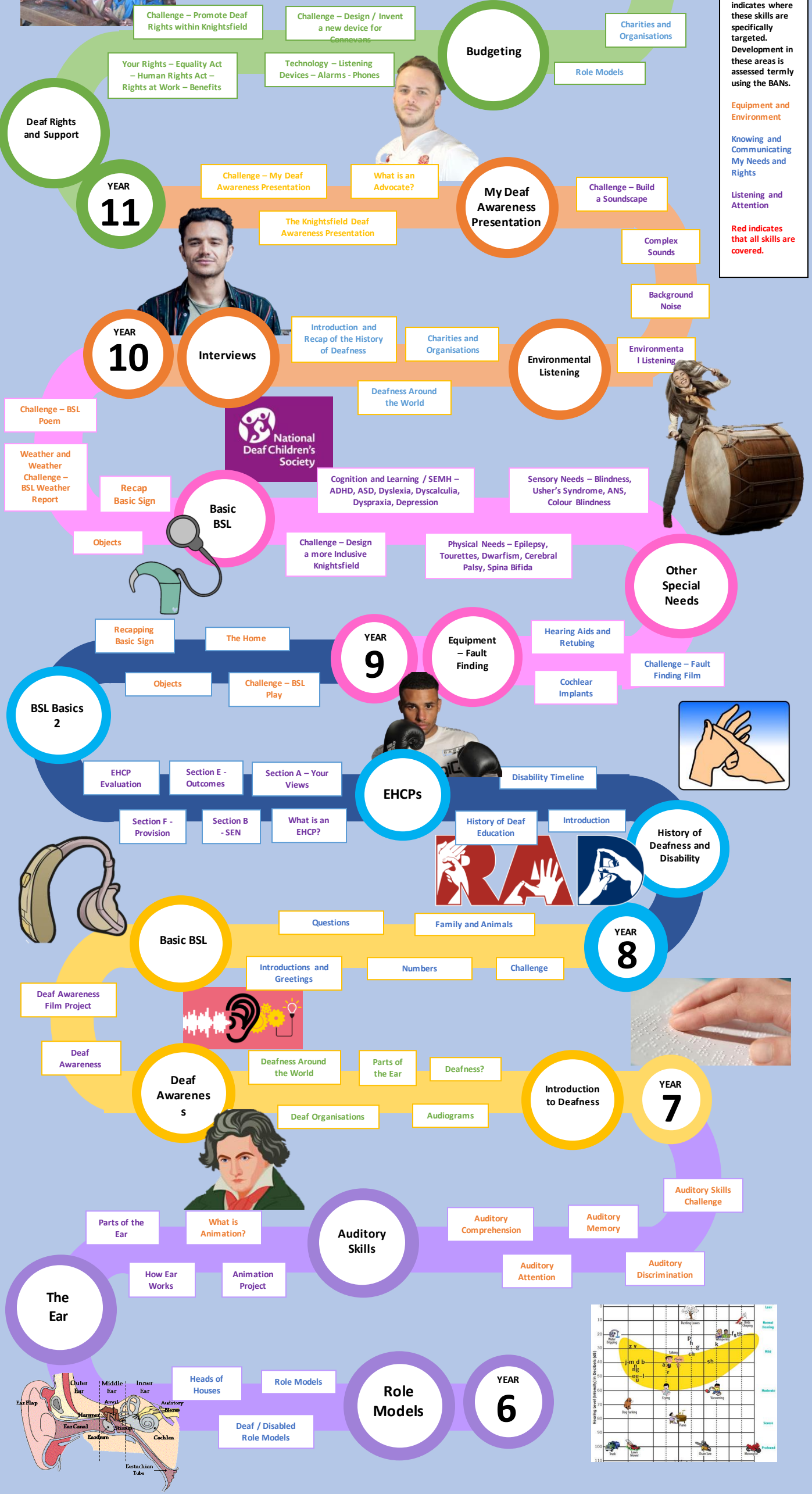


Language – Physical and Sensory



Summary:
Knightsfield School delivers 30 minutes of Language Lessons per day (where the time table allows). These Language Lessons covers the Broad Areas of Needs (found in their EHCP): Communication and Language; SEMH; Cognition and Learning; Physical and Sensory; and Independence. These lessons challenge and develop student in all areas.



Physical and Sensory Skills:

Physical and Sensory skills will be assessed and developed in all lessons throughout Key Stages 3 and 4. The colour code indicates where these skills are specifically targeted. Development in these areas is assessed termly using the BANs.

Equipment and Environment

Knowing and Communicating My Needs and Rights

Listening and Attention

Red indicates that all skills are covered.

