



Knightsfield School

Achieve - Believe - Communicate



We provide a specialist auditory-oral approach to learning for deaf children from Years 5 to 13. Knightsfield is a happy and successful school with a supportive environment.



We are delighted to announce that Knightsfield continues to be rated 'Outstanding' following the recent most inspection in December 2018.

Welcome

Message from the Headteacher



Suzanne Thrower
MA Inclusive Education (SEN)

I would like to welcome you to Knightsfield School. We provide a specialist auditory-oral approach to learning for deaf students in Years 5 to 13; some of our students also have additional needs. Knightsfield is a happy and successful school with a supportive environment and a high regard for safeguarding our students throughout their education. We set high expectations for students, encouraging each child to achieve academically and to develop independence in preparation for their future. To achieve this, individual needs are identified and well supported. We are proud of our students, knowing that they make considerable progress in both their personal and academic development during their time here. Our students' learning is enriched with opportunities of both mainstream and special education, due to the superb links with Monk's Walk School and with extended opportunities in their Post-16 education.

All parents seek the best for their children and this is especially prevalent when they reach secondary education; a catalyst for their future. In 2012 we were awarded Academy Status by the Department of Education as an outstanding school meaning that our successes have been officially recognised and we are proud to be graded as 'outstanding' once again by Ofsted in December 2018. We work closely with our parents and families, who often travel a considerable distance to gain the benefits of our school. This prospectus gives a 'snippet view' of our whole school community. We would encourage you to visit us, to have a look round and meet with staff and students to give you a bigger picture of life at Knightsfield, where you can see our students 'Achieve, Believe and Communicate'.



The Curriculum

Organisation and Specialisation

"From their first year at Knightsfield School, pupils have many opportunities to develop their self-esteem, resilience and independence in order to transition well to the Key Stage 5 curriculum and beyond."

The curriculum consists of activities planned by the school to promote the intellectual, personal, social and physical development of its pupils and to prepare them for the opportunities, responsibilities and experiences of adult life.

Our emphasis is on the individual needs of each student. Learning activities are differentiated to ensure that our deaf students can access the full range of subjects. Many resources are available during lessons, such as use of the library, visualisers, touch-screen monitors, computers with a full range of up to date software, iPads and the Internet. In addition, theatre trips, fieldwork and visits to museums, art galleries and places of historical, scientific and technological interest are a key part of the curriculum for all students. All pupils take part in daily ABC (Achieve, Believe, Communicate) sessions for 30 minutes. These are taught in mixed year groups to facilitate integration and social inclusion.

Sessions are designed to support pupils in their broad areas of need (BANs) including cognition and learning, social emotional and mental health, communication and language, physical and sensory, deaf awareness, and independence. Students either attend a whole-school assembly, work together on topics to present in form assemblies or work on self-evaluating individual progress towards their learning targets.

Speech and Language Therapists (SaLTs) work with individual students and small groups to optimise the students' language development in collaboration with Teachers of the Deaf. Specialist teaching assistants work closely with pupils and teachers to support students' individual needs and foster independence. Ongoing staff training is provided to understand the needs of our pupils. Additional funding (Pupil Premium and Catch-up Funding) is used to support selected groups to develop their literacy and numeracy skills through targeted interventions. Opportunities are made, as part of the day-to-day curriculum, for pupils to undertake a variety of educational trips during school time. British values form an intrinsic part of lesson content, PSHCE sessions and whole-school assemblies contributing to the promotion of a multi-cultural outlook. Lunchtime clubs instill a love for learning as well as an opportunity to develop social communication and allow for purposeful relaxation. Through the Education Health Care Plan process, pupils are provided with targets on their Broad Areas of Need (BANs) to focus on their holistic development.





Facilities

to Support Deafness



Knightsfield School is well equipped with audio visual and ICT equipment including a brand new ICT suite and iPads. There is a dedicated audiology room. All rooms are acoustically treated, meeting and exceeding BB93 requirements and students use radio hearing aid systems to enable them to hear teachers and/or teaching assistants at a constant level of amplification matched to their individual hearing loss. Lessons are delivered using a multi-sensory approach with a visualiser and laptop linked to a projector to support pupils' access to the curriculum. There are specialist teaching rooms for art and design technology, food technology, ICT, music and science.

Speech & Language Therapy NHS Speech and Language Therapist are commissioned by Hertfordshire Local Authority to work at Knightsfield School. The Speech and Language Therapists assess and work with our students to develop speech, language and functional communication skills as well as supporting our staff in developing strategies to maintain progress. Students may be seen on an individual or small group basis and supported to generalise skills into the classroom. Our vision is a world where all students have the communication skills they need to fulfil their potential.

Students' desks are arranged in a horseshoe facing the teacher's desk to facilitate listening and lipreading.





THE ABC CURRICULUM

Achieve - Believe - Communicate

At Knightsfield, we believe in a holistic approach to education which teaches the whole child. With strong links to the Expanded Core Curriculum, our ABC Curriculum is delivered daily for 30 minutes and addresses educational needs that are above and beyond the general curriculum. This includes a genuine commitment to a meaningful Reading Strategy, enriching activities and the following 6 pillars to prepare our students for adulthood:

1.

PHYSICAL & SENSORY AWARENESS

2.

COGNITION & LEARNING

3.

COMMUNICATION & LANGUAGE

4.

SOCIAL, EMOTIONAL, MENTAL HEALTH

5.

DEAF IDENTITY & INDEPENDENCE

6.

CAREERS EDUCATION

Mainstream

Liaison and Integration



All individual and groups of students attending lessons at Monk's Walk School are supported by Knightsfield staff. In addition, our students have the opportunity to participate in extra-curricular activities with Monk's Walk students. This includes lunchtime and after-school clubs. Our students participate in Monk's Walk School subject-related and extra-curricular trips. Each year a number of our students enjoy attending Monk's Walk trips to the battlefields, art galleries and museums. Having use of the Monk's Walk canteen offers another opportunity for our students to mix with their peers.

To ensure that the co-sited secondary school has a full awareness of our students' needs, staff and pupils attend deaf awareness training. All teachers of Knightsfield students attend regular refresher sessions.

Our location has allowed for further development of the strong relationship between both establishments, which began when Knightsfield School, then known as Tewin Water School, was based in Digswell. The link was formalised in 1998. This arrangement means that whilst Knightsfield pupils have all the advantages of being part of a specialist small school environment, we can also offer inclusive educational and social opportunities at Monk's Walk. The students of both schools benefit from the interactions they have, both in lessons and at other times. In KS3 Knightsfield students attend art lessons at Monk's Walk and there are also opportunities for students to attend other lessons. In KS4 students opt for a wide variety of subjects at Knightsfield but may also choose subjects that are taught at Monk's Walk. This gives our students even more choice. More academically able students attend Monk's Walk for a tailored package of subjects and in KS4, several GCSE options are available - adding to our curriculum offer.

Knightsfield School was built within the grounds of Monk's Walk in 1997 and facilitates a strong relationship with our mainstream partners.



Kit List:

- Navy Games Jersey and Polo Shirt
- Plain navy shorts or plain navy skirt
- Plain navy sports socks
- Trainers
- Black or navy one-piece swimming costume
- Black or navy swimming trunks / shorts

Extras:

- Navy tracksuit bottoms
- Rain jacket
- Shin pads
- Moulded boots/astro boots for use on the artificial pitch.
- Navy blue 'skin' under normal PE kit

Students in Key Stage 3 follow the National Curriculum for PE. We have a wide range of facilities to offer numerous sports and activities to our students. To enhance our offer, we are able to use the facilities at our co-sited mainstream school to deliver activities such as swimming. In years 10 and 11 students are enrolled on the Sports Leaders programme where they have the opportunity to coach younger students whilst attaining an additional level 1 or 2 qualification.



Post-16 Education

Well-Established Links Enrich 6th Form Experience

Our strong and well-established partnership with Oaklands College and being part of the Welwyn & Hatfield 6th Form Consortium enable us to offer a broad range of subjects to students in terms of the optimal level of support required and level of study. We offer the opportunity to take one or more A levels at Monk's Walk School, alongside, if appropriate, GCSE subjects at Knightsfield. Those attending college will be expected to spend a certain number of hours in school. This enables students to be supported with both coursework and functional skills or GCSE English and maths, as required.

All Post-16 students also follow a programme for careers and PSHE. In addition, there is the opportunity for individuals to participate in various enrichment programmes in preparation for adulthood, and have time for supervised and independent study.

Also, there is the possibility of being involved in supporting and mentoring younger students. Dedicated facilities include a common room, a study area and teaching room. Individual targets for Post-16 studies are set, based on GCSE grades.

A significant number of our KS4 pupils choose to continue into our sixth form and we also welcome enquiries from students who wish to join us, from other schools.

Progress towards these targets is reported and monitored by tutors and teachers at Oaklands or Monk's Walk.

Student progress is regularly reviewed by staff at Knightsfield, who support students in meeting their targets and help address any areas in need of development. Teaching and support in GCSE studies is provided by specialist teaching staff at Knightsfield. When carrying out studies at either Oaklands or Monk's Walk, students have the support of Knightsfield teaching assistants or notetakers. They support students as required, which may involve just notetaking, but also closer one to one support, in the teaching sessions. The aim is to ensure students have the support they need whilst helping and encouraging the development of independence. On completion of their time with us, our Post-16 students choose to enter employment directly, take up apprenticeships, continue to university courses or, in some cases, continue at college.

"In the sixth form, students have the opportunity to follow a wide range of courses at the co-located mainstream school and at a local further education provider. Individuals are supported by Knightsfield staff going with them to these courses and acting as notetakers so that the students do not miss any aspect of the learning due to their deafness."

OFSTED, 2018



LEARNING SCORES

Using a combination of the following results, we create a learning score for every pupil which is used alongside cognitive test results to set realistic and aspirational targets for every student:

- Tests for Resiliency and Vulnerability
- Tests for Reading Levels
- Tests for Listening Skills
- Vocabulary Tests



MONITORING

We monitor the progress of students three times a year to identify those who require extra support or targeted intervention to ensure that they meet or surpass their targets.

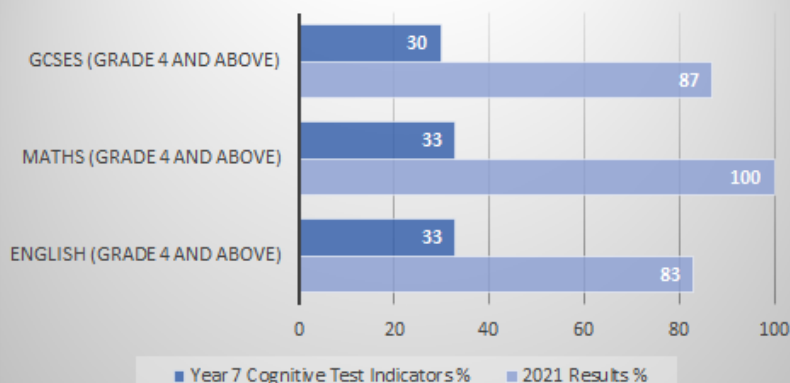
Targets do not provide a ceiling for students and are discussed and determined for each student in each subject every year, in consultation with teaching staff.

ADDING VALUE

We use cognitive tests and prior attainment in year 7 to predict most likely outcomes at GCSE. The graph shows how student attainment at GCSE comfortably surpasses those predictions in all subjects and in mathematics and English.

This added value is attributed to the small class sizes, rigorous target setting and monitoring, and the targeted intervention that is implemented to support the learning of our students.

2021 GCSE Results - Value Added





EXTRA CURRICULAR

and Enrichment Activities

EXTRA CURRICULAR

Extra-curricular activities are a thriving part of school life at Knightsfield. As well as entering national competitions in football, swimming, boccia, ten-pin bowling and athletics, we also compete locally against other special and mainstream schools. In addition, our students have also represented our partner school, Monk's Walk, in county competitions.

We also provide a full extra curricular programme for our students during the school day. Our lunchtime clubs timetable is extensive and includes activities such as; football, touch rugby, volleyball, yoga, fitness, mindfulness, craft club, homework club, cards club, rounders, table-tennis to name but a few!

ENRICHMENT:

At Knightsfield, we value the holistic approach to education and include many 'drop-down' days that enrich the experience of our students. Such days have included: poetry workshops (by award-winning deaf poet, Raymond Antrobus), Aim High day with International deaf footballer, Fil Kamps, a visit from the 'Punk Chef', deaf boxer Reece Cattermole, ELSA organised careers days, Crucial Crew days and many more.

School trips also feature heavily in providing a truly well-rounded experience for students. Recent trips have included: the Roald Dahl museum, the National Science Museum, Hertford Theatre, Paradise Wildlife Park and The Globe Theatre. Knightsfield also offers residential trips such as Outdoor Adventures at Caythorpe Court and The Battlefields in Belgium.



HOUSE SYSTEM

Role Models for Our Students

We have a thriving House System at Knightsfield with regular assemblies and competitions in activities such as: creative writing, baking, drama, and a variety of sports. Our Head of Houses are regular visitors to the school, who enjoy working with the students, giving assemblies and passing on words of inspiration,



CLARKE HOUSE:

'Own your identity and be you....love who you are in the world. Love your deafness, it is part of you"

Melanie Clarke is a deaf long distance runner who has represented Great Britain.

ANTRO(BUS) HOUSE:

"Be fluent in confidence so large it speaks from its own sky"

Raymond Antrobus is an award-winning deaf poet.



HADDOCK HOUSE:

"Let your sight, touch, smell and taste do the listening"

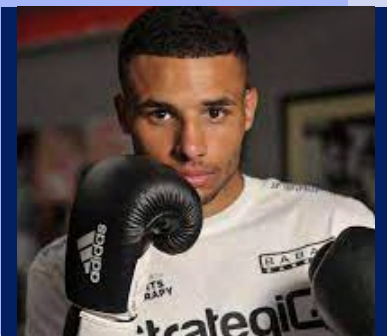
Jack plays rugby for the deaf England team.



CATTERMOLE HOUSE:

"The only obstacle is yourself. Accept yourself. Move forward to achieve your dreams"

Reece Cattermole is the first professional deaf boxer.



WHAT NEXT?



As the school continues to grow we strive to improve our practice and the lives of our students. Plans are in place to construct a new, state of the art indoor facility that will serve as a multi-purpose area for sport, drama and music productions.

The development will include 2 new classrooms and will meet the acoustic requirements necessary for optimal listening conditions for our students – no mean feat for a high-ceilinged sports hall!

The school already has a year 6 class and plans are in place to extend this further to include year 5.

Since the introduction of primary provision, we have found that students who join us earlier in their schooling develop their confidence and pride in their deaf identity much sooner.

COME AND SEE FOR YOURSELF:

Don't take our word for it – we are happy to take visitors. Please book a tour from the contact details below and follow us on social media:

Knightsfield School, Knightsfield, Welwyn Garden City, Hertfordshire. AL8 7LW



01707 376874



admin@knightsfield.herts.sch.uk



knightsfield.herts.sch.uk



[instagram.com/knightsfieldschool/](https://www.instagram.com/knightsfieldschool/)



twitter.com/KnightsfieldSch